

1. Institutional setting

All reforms in waste management are based on:

- Waste Management Plan 2016-2020;
- Municipal Regulation on Waste Management 03/2016;

Based on the objectives of the Municipal Waste Management Plan, the department has worked intensively on:

- Allocation of municipal budget for the waste collection service;
- Capital investments in the entity of the public company;
- Coverage with basic services in 100% of the municipal territory with the improvement of the disposal infrastructure;
- Undertake municipal sector policies through pilot projects for the separation at source of recyclable waste in urban areas;

Project financing and sustainability

- All activities have been supported by GIZ with expertise, awareness-raising campaigns, infrastructure for waste separation (containers).
- The process is difficult for the municipality to sustain due to lack of staff capacities and budget.
- The municipality is financing the salaries of the social enterprise staff, as the income generated by recyclable material does not cover the collection costs.
- Separation at source is now included in municipal waste management reforms, the municipality foresees to subsidize the system till the separation at source is a sustainable process by itself, with income generated by recyclable materials.

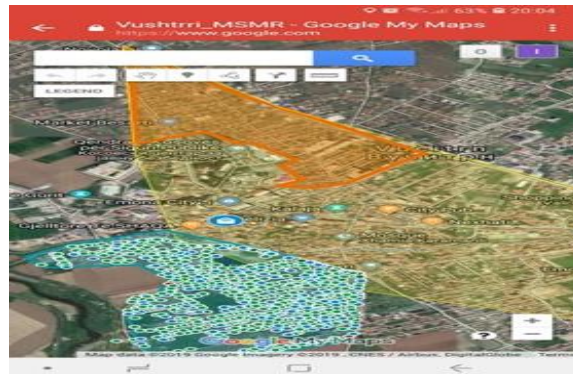
2. Starting point/Project goal

PROJECT GOAL:

- Creation of a sustainable model for the functionalization of the social packing centre for recyclable materials through the implementation of a system of separation at source of recyclable waste in urban areas.

STARTING POINTS:

- 2017: Preparation of the reorganization concept for separation at source and cost analysis for a sustainable recycling scheme;
- 2018: Awareness-raising activities for a new system of waste separation at source;
- 2018: Distribution of containers for recycling;
- 2018: Finding mechanisms to functionalize the social enterprise for the packaging of recyclable materials, in parallel creation of capacities for the collection of recyclables by Public Utility Company Uniteti.



3. Approach

- Creation of work preconditions for the functionalization of the social enterprise as a municipal unit within the framework of the public company entity;
- Conception of preconditions for separation at source and provide infrastructure for the pilot zone and target groups with potential to generate recyclable waste;
- Development of an awareness-raising campaign in educational institutions and in the pilot areas;
- Distribution of infrastructure (containers) for separation organisation of collection in coordination with the packaging center;
- Monitoring the system and creation of the collection itinerary of recyclable materials;
- Expansion of the system of separation at source in a larger neighborhood;
- Starting subsidy for social workers' salaries.



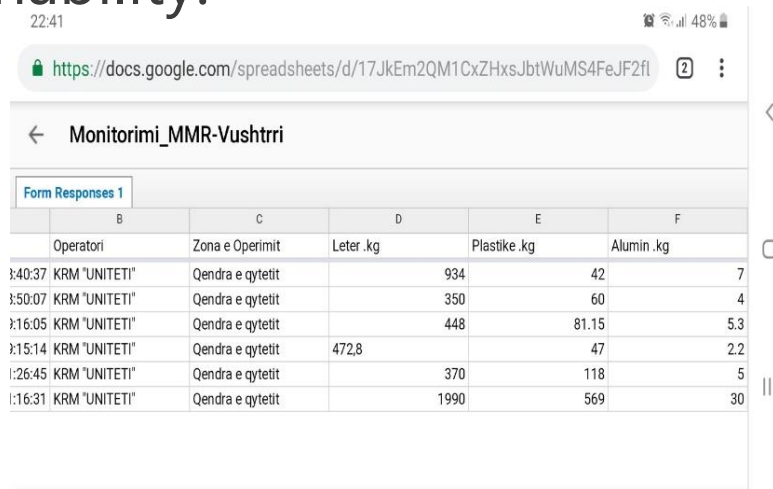
4. Outputs

- Approximately 1300 entities are practicing separation at source in three city neighborhoods including institutions and big businesses;
- According to reports, ~35% of total amount of waste produced in pilot zone goes to the packaging centre;
- Increase in the amount of recyclable material such as plastic/paper/metal ~ 90 tons of recyclable material (65 tons plastic) per year goes to the recycling sector, which means less waste in the landfill;
- Employment of 3 workers at the packaging centre;
- Educational institutions in the municipality have integrated environmental protection programs and are part of the source process.



5. Lessons

- Development of the process of separation at source has a direct impact on development of circular economy and create possibility for employment;
- Strategic project under the separation at source of waste are more efficient operating as a "Municipal "unit based on challenge of market price of recyclables;
- The increase of quantity and quality of recyclable waste made the enterprise self sustainability.



The screenshot shows a mobile view of a Google Sheet titled "Monitorimi_MMR-Vushtri". The sheet contains a table with 6 columns: Operatori, Zona e Operimit, Leter .kg, Plastike .kg, and Alumin .kg. The data is as follows:

Operatori	Zona e Operimit	Leter .kg	Plastike .kg	Alumin .kg	
3:40:37 KRM "UNITETI"	Qendra e qytetit		934	42	7
3:50:07 KRM "UNITETI"	Qendra e qytetit		350	60	4
3:16:05 KRM "UNITETI"	Qendra e qytetit		448	81.15	5.3
3:15:14 KRM "UNITETI"	Qendra e qytetit	472,8		47	2.2
1:26:45 KRM "UNITETI"	Qendra e qytetit		370	118	5
1:16:31 KRM "UNITETI"	Qendra e qytetit		1990	569	30

6. Follow-up

What would be the most appropriate mechanisms for extending the recyclable waste collection system throughout the territory?

Based on results of the project, as preconditions for separation scheme are:

- Enlarge the target group who practice separation and Improve Infrastructure for separation at source;
- Improve proper equipment for treatment of recyclables in order to increase the price market of recyclables;
- Community awareness raising to accept the new system.