



Connective Cities Insight Session

Local Economic Development through Skilled Immigration and Migrant Entrepreneurship

Practical Approaches from Municipalities

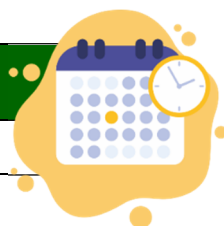
25 March 2026, 10:00 – 12:30 (CET)

Online Event | Language: English

The interactive online session will bring together German and international municipal practitioners to exchange experiences, learn from practical examples, and discuss approaches to promoting local economic development through skilled labour immigration and migrant entrepreneurship.

Objectives:

- Showcase effective municipal strategies to support successful and fair immigration of skilled workers and migrant-founded businesses
- Raise awareness of local governance challenges and opportunities
- Highlight transferable solutions for different local contexts
- Strengthen local governments' capacity to leverage their scope of action to support skilled worker immigration and migrant entrepreneurship as drivers of local economic development.



Time (CET)	Preliminary Agenda
10:00	Beginning
TOP 1	Welcome and short presentation of Connective Cities
TOP 2	<p>Presentation of practical approaches from municipalities:</p> <ol style="list-style-type: none"> District of Pinneberg, Germany: A coordinated local approach to skilled immigration: Supporting and connecting institutions, talent, and local businesses City of Mersin, Türkiye and City of Oberhausen, Germany: Migrant entrepreneurship and municipal measures to support migrant start-ups City of Munich, Germany: Skilled labour strategy in Munich and support of an entrepreneurship centre in a project partnership with Gharb Irbid, Jordan <p>Additional input:</p> <ol style="list-style-type: none"> Germany's Institute for Employment Research (IAB): Insights into return and onward migration intentions of immigrants from the International Mobility Panel of Migrants in Germany
TOP 3	<ul style="list-style-type: none"> • Discussion of the presented approaches • Interactive reflection on the applicability to the participants' respective local contexts and potential room for manoeuvre
12:30	End

Commissioned by



Partners of Connective Cities



with its

